

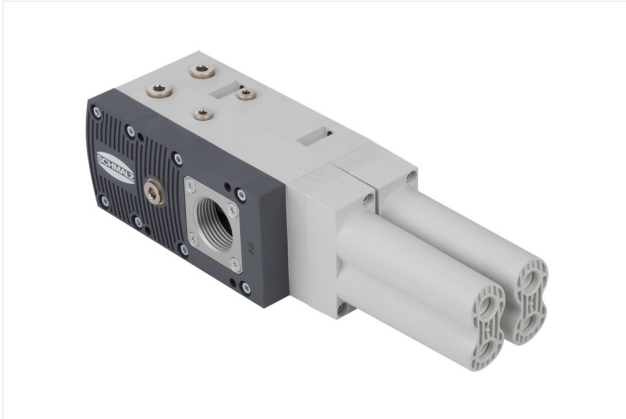
## Basic Ejector

SBPL 100 HF

Part no...:10.02.01.01598

Home > Vacuum Technology for Automation > Vacuum Components > Vacuum Generators > Basic Ejectors > Basic ejectors SBPL > SBPL 100 HF

### Basic ejector with maximum suction capacity



Size: 100

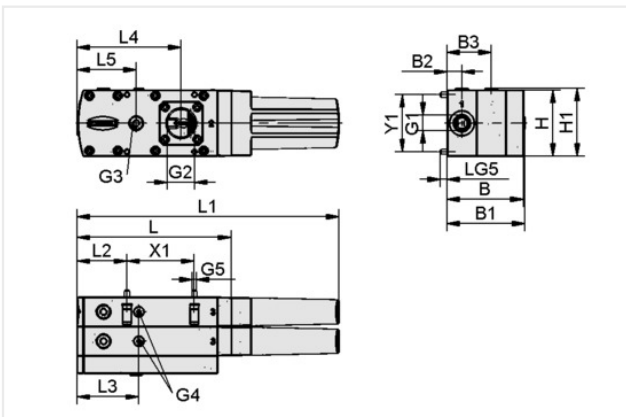
Shape: High Flow

Suction rate (max.): 860 l/min

Air consumption suction: 300 l/min

Weight: 1.1 kg

### Design Data



Attribute	Value
B	83 mm
B1	85 mm
B2	16 mm
B3	48 mm
G1	G3/8"-F
G2	G1"-F
G3	G1/4"-F
G4	G1/8"-F
G5	M5-M
H	72 mm
H1	74 mm
L	167.50 mm
L1	285.30 mm
L2	54 mm
L3	67 mm
L4	113 mm
L5	64 mm
LG5	8.50 mm
X1	73.50 mm
Y1	62 mm

## Basic Ejector

SBPL 100 HF

Part no...:10.02.01.01598

### Technical Data

Attribute	Value
Size	100
Degree of evacuation	60 %
Max. vacuum	600 mbar
Suction rate (real)	860 l/min
Suction rate (theo)	1300 l/min
Suction rate (real)	51.60 m <sup>3</sup> /h
Suction rate (theo)	78 m <sup>3</sup> /h
Air consumption suction	300 l/min
Air consumption suction	18.50 m <sup>3</sup> /h
Sound level free	69 dB(A)
Sound level suction	58 dB(A)
Pressure range (operating pressure)	2.0 ... 6.0 bar
Pressure range (operating pressure)	29.0 ... 87.0
Recomm. internal hose diameter compressed air	9 mm
Recomm. internal hose diameter vacuum	32 mm
Weight	1.10 kg
Operating temperature	0 ... 60 °C
Max. vacuum	17.72 inHg
Product family	SBPL

### Accessories



#### VAM 40 V DR

Part no...:10.07.02.00035

External diameter D: 40 mm

Measuring range: -1,00 ... 0,00 bar

Construction shape manometers: With sealing ring

Vacuum connection: G1/8"-M

## Basic Ejector

SBPL 100 HF

Part no...:10.02.01.01598



### VAM-D 30x30 VP10 G1/8-AG

Part no...:10.07.02.00055

Length L: 30 mm

Width B: 30 mm

Measuring range: -1,0 ... 10,0 bar

Vacuum connection: G1/8"-M



### VSi V M12-4

Part no...:10.06.02.00570

Measuring range: -1,0 ... 0,0 bar

Electrical connection: Male connect M12, 4 pol

Indication: LED

Protection type IP: IP 65



### VSi V D M12-4

Part no...:10.06.02.00580

Measuring range: -1,0 ... 0,0 bar

Electrical connection: Male connect M12, 4 pol

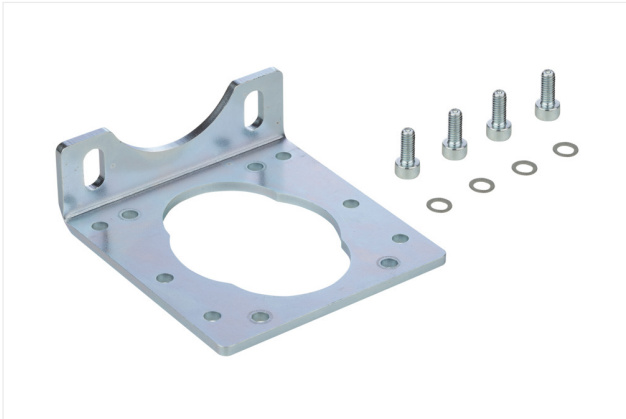
Indication: 2xLED

Protection type IP: IP 65

## Basic Ejector

SBPL 100 HF

Part no...:10.02.01.01598



### BEF-WIN 72x25x77 SBPL

Part no...:10.02.01.01705

Construction use: Basic ejector

Length L: 72 mm

Width B: 25 mm

Height H: 77 mm

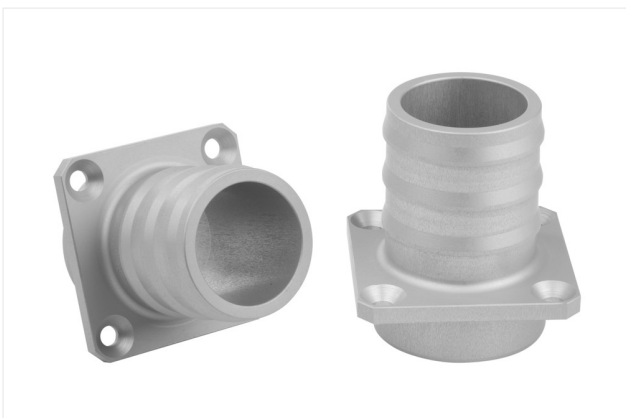


### EMV 3 24V-DC 2/2 NC K-2P

Part no...:10.05.01.00366

Internal diameter d: 6 mm

Length L: 64.5 mm



### ST 32 AL-EL

Part no...:10.02.01.01681

Material: Aluminum

Construction use: Basic ejector

External diameter D: 32 mm

Length L: 4 mm

Width B: 46 mm

## Basic Ejector

SBPL 100 HF

Part no.:10.02.01.01598



### VSL 42-32 PU-DS-AS

Part no.:10.07.09.00036

External diameter D: 42 mm

Internal diameter d: 32 mm

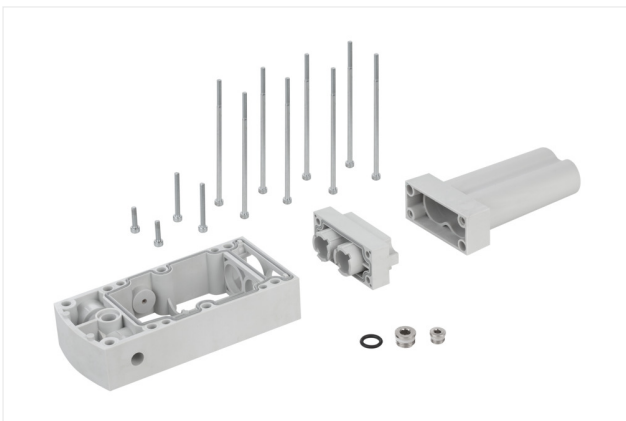
Length max.: 20 m

Material hose: PU, wire spiral, antistatic

Bending radius min.: 25 mm

Pressure range (operating pressure): -1.00 ... 3.77 bar

Operating temperature: -40 ... 90 °C



### SET SBPL 125/150

Part no.:10.02.01.01686

Construction use: Basic ejector

Size: 125/150



### VRS-ST 15x101.7 SBPL

Part no.:10.02.01.01687

Construction use: Basic ejector

External diameter D: 15 mm

Length L: 101.7 mm

## Basic Ejector

SBPL 100 HF

Part no...:10.02.01.01598



### SEP HF 3 13 22

Part no...:10.02.01.01348

Shape: High Flow

Number of stages: 3

Nozzle size: 1.3 mm

Hole diameter: 22 mm

Degree of evacuation: 61 %

Pressure range (operating pressure): 2.0 ... 6.0 bar

Pressure optimal: 4 bar

Suction rate (max.): 297.6 l/min

Air consumption suction: 74 l/min

## Spare parts



### ERS SEP-22 6xRUE-KLAP

Part no...:10.02.01.01450

Construction use: Ejector module

Size: 22

contains: 6x flap



### SD 102x71x33 SBPL

Part no...:10.02.01.01585

Construction use: Basic ejector

Length L: 102 mm

Width B: 71 mm

Height H: 33 mm

## Basic Ejector

SBPL 100 HF

Part no...:10.02.01.01598



### SEP HF 3 13 22

Part no...:10.02.01.01348

Shape: High Flow

Number of stages: 3

Nozzle size: 1.3 mm

Hole diameter: 22 mm

Degree of evacuation: 61 %

Pressure range (operating pressure): 2.0 ... 6.0 bar

Pressure optimal: 4 bar

Suction rate (max.): 297.6 l/min

Air consumption suction: 74 l/min



### DI-RA 112.5x34.8 NBR-55 SBPL

Part no...:10.02.01.01541

Construction use: Basic ejector

Length L: 112.5 mm

Width B: 34.8 mm

Height H: 2.8 mm

## Basic Ejector

SBPL 100 HF

Part no...:10.02.01.01598



### ERS SEP-22 6xRUE-KLAP

Part no...:10.02.01.01450

Construction use: Ejector module

Size: 22

contains: 6x flap



### O-RING 10x2.5 NBR-70

Part no...:10.07.08.00002

Material: Nitrile rubber NBR

Internal diameter d: 10 mm